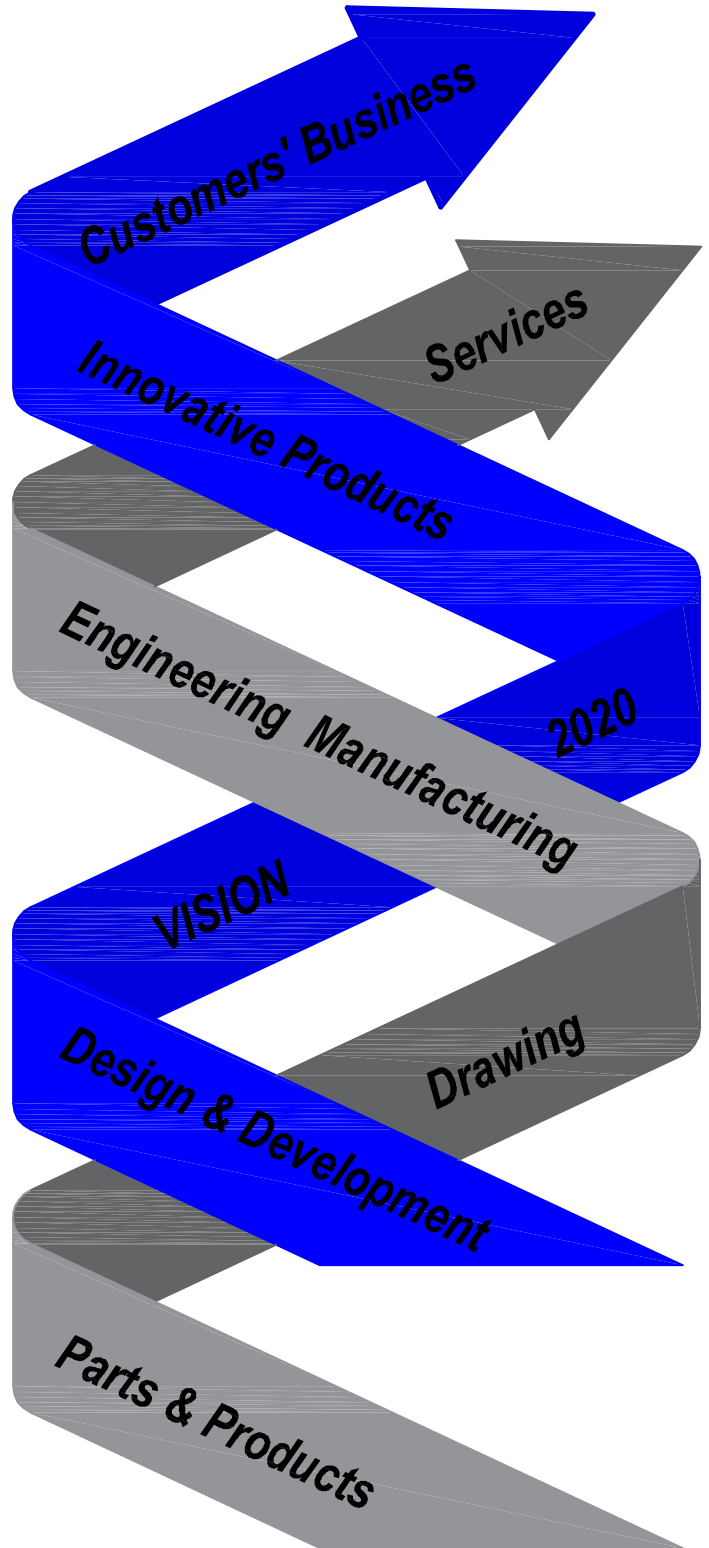




Company Profile



Annex Engineering

Technical, Professional & Practical Solution

Message



**Representative Director
Muhammad Kashif**

We engage in manufacturing business activities guided by its Vision "Lead in 3D for the future [2020]". To realize the company Vision, we endeavor to solve technical issues with our prominent capabilities and qualities while working to reach

the Sustainable Development Goals adopted by OEMs. Looking ahead, we will work to create new value and accelerate the pace of growth through fusion of our efforts and business opportunities with external resources through timely decision-making that allows us to leverage the benefits. of the Divisional Company Structure.

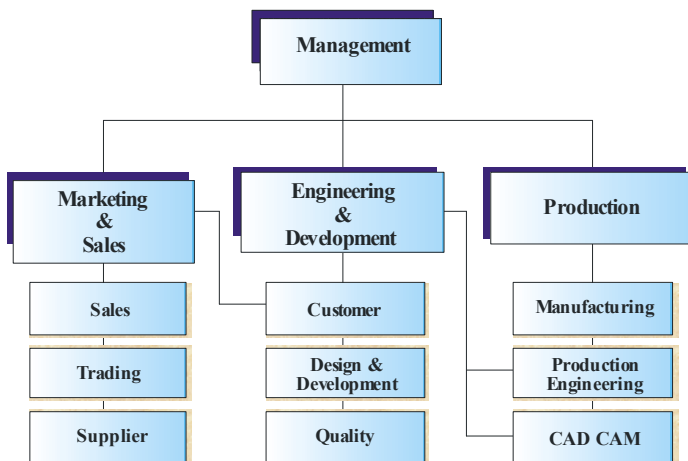
Competencies

Drawing (Reverse Engineering) is to support various engineering process and deliver excellent outcomes.

Designing and delivering technical services to support individual, institutional and OEMs .

Developing engineering and technical competencies for our valued customers.

Organizational Chart



Quality Vision

The mission of Annex Engineering is

“The enhancement of Customer Satisfaction through QUALITY, ON TIME DELIVERY & CONTINUOUS IMPROVEMENT”.

Vision

Moving ahead >>> in

3D

**Drawing
Design
Development**

Mission

The mission of Annex Engineering is

“To provide engineering and technical solutions that are responsive to our customers' needs in an innovative, cost effective, professional, quality service manner.”

Values

Collaboration: we are one team pursuing one vision.

Commitment: we deliver on our promises; living our values through integrity, trust, and respect.

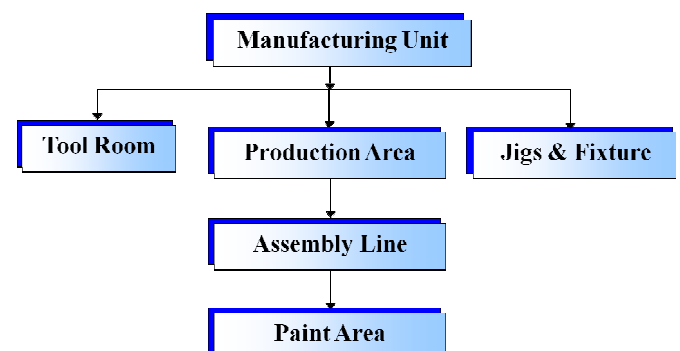
Creativity: we invest in continuous improvement (Kaizen).

Courage: we are courageous in our pursuit of engineering excellence.

Colossal: we are proud of our achievements compared to others.

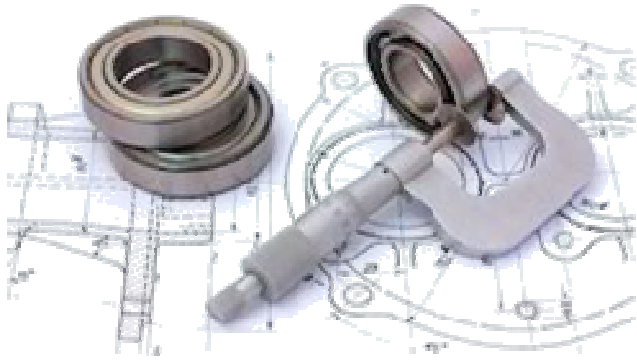
Manufacturing Facilities

Customer Vision into reality has turned up by the experienced and professional team with best equipment and tools. We are broadening the application of modern techniques to support our production from design to final product and produce satisfied results for our valued customers.

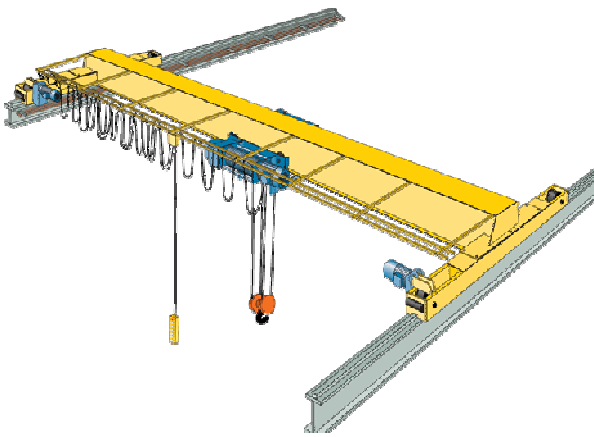


Our Services

① Reverse Engineering:



② Overhead Crane Fabrication and Installation:



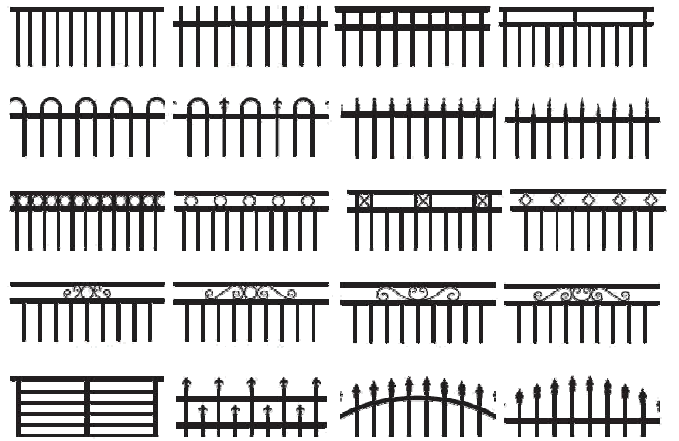
③ Ladder & Ramps :



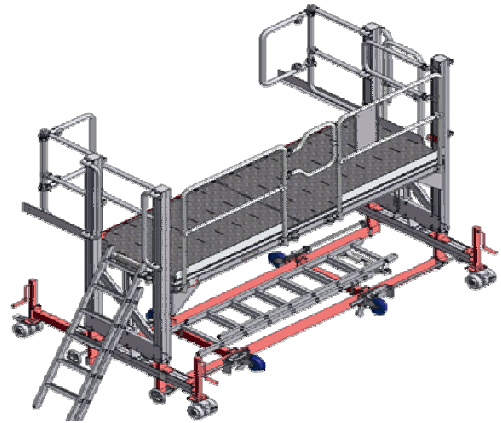
④ Conveyer System :



⑤ Fencing & Grills :



⑥ Platform



⑦ Cargo Body



⑧ Shell Body

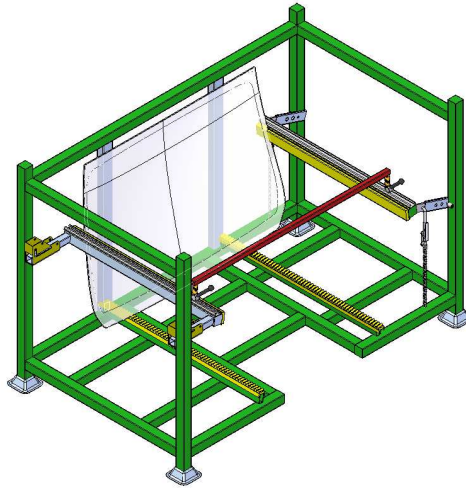


Our Customize Works

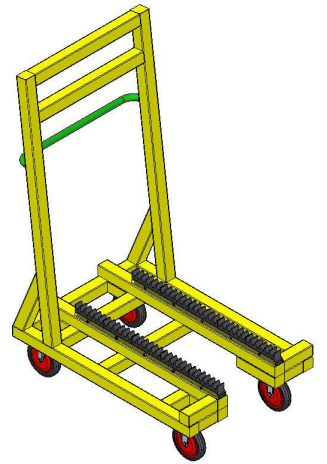
① Exhaust Pipe Trolley Corolla (Loads)



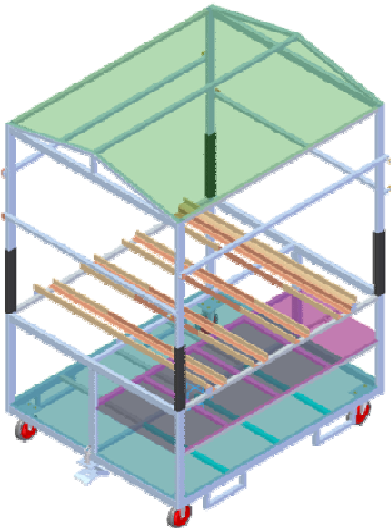
② Semi Finish Good Trolley (Tecno)



③ Moving Trolley (Tecno)



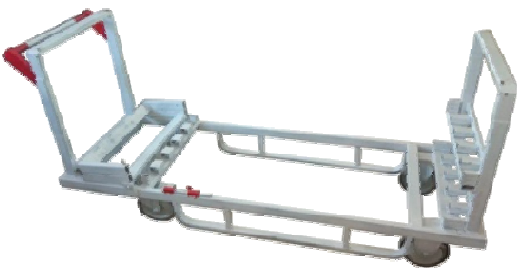
④ Seat FG Trolley (Thal Bosoku):



⑤ Finish Good Trolley (Tecno)



⑥ Suspension Trolley IMV (NAC)



⑦ Side Glass Trolley Toyota (Ahmed Glass):



⑧ Tool Trolley (Hinopak):



⑨ Cargo Trolley:



Our Products

① Pintle Hook

Capacity: 3, 5 & 8 Ton



② Shackle Hook:



③ Portable Crane:

Auto & Manual



④ Heavy Duty Hinges



⑤ Landing Gears



⑥ Spare Wheel Carrier:

Auto & Manual



Our Customers



Loads Limited



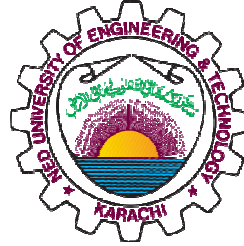
Tecno Auto Glass



HINO



THAL BOSHOKU PAKISTAN



Other Information

Company Name	:	Annex Engineering
NTN	:	3186472-4
STRN	:	3277876180315
Business Type	:	Manufacturing, Fabrication & Modification
Major Business Partner	:	MK Enterprises
Stakeholder	:	United Engineering